



PO Box 274 - Eastham, MA 02642
www.easthamdog.org

EDOAA

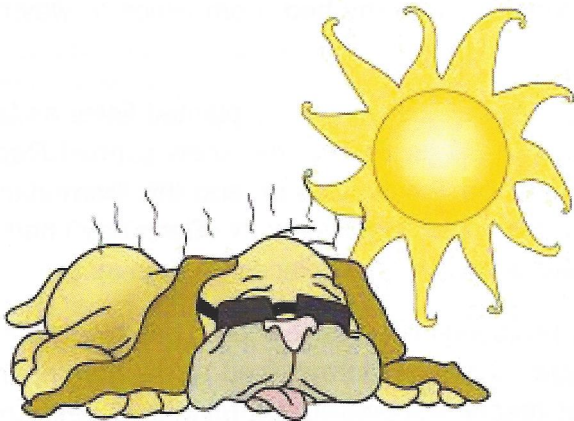
FOCUS

Summer 2016

DOA is a non-profit citizens' group advocating on issues affecting dogs & dog owners in Eastham, MA

Welcome to the Dog Days! Summer Canine Safety Tips

While lots of us love the dog days of summer relaxing on the beach (and some folks wish there were fewer "No Dogs Allowed" signs on the Cape's beaches & trails!), our canine companions are healthier & safer in cool, comfortable surroundings.



1. Know the signs of heatstroke & avoid situations that can increase risk

If you suspect that your dog has heat stroke, get to the vet ASAP. Lower your pet's temperature with cool--NOT icy cold--water (gently hose the hound and then apply damp towels while travelling to the vet). Heatstroke symptoms include panting, lethargy, drooling, fever, vomiting, and collapse.

2. Never, EVER leave your dog in a hot car

It can take minutes -- yes, MINUTES -- for a pet to develop heat stroke and suffocate in a car. Most people don't realize how hot it gets in parked cars. On a 78° day, for instance, temperatures in a car can reach 90° degrees in the shade & top 160° if parked in the sun! Your best bet is to leave your dog home on warm days. If you're driving around with your dog in the car, bring water and a water dish and take your dog with you when you leave the car.

3. Keep your dog's paws cool: stay off asphalt & other hot surfaces!

When the sun is cooking, surfaces like asphalt, metal, and sand can get really hot! Avoid places like the beach and especially concrete or asphalt areas where heat is reflected and there is no access to shade. Hot surfaces burn paws and can contribute to heat stroke.

4. Provide your dog with access to fresh drinking water & shade

Our dogs get much thirstier than we do when they get hot, and other than panting and drinking, they really have no way to cool themselves down. Make sure they have extra water and maybe a frozen treat (like low-sodium, onion-free chicken broth ice cubes). Keep your pet in the shade as often as possible.

5. Exercise your dog early in the morning or late in the evening.

Use common sense: Would you go jogging in a fur coat in this weather?

6. Make sure your dog is protected from parasites

If not protected, your dog is at risk for heartworm, Lyme disease, Rocky Mountain spotted fever, and a host of other nasty & dangerous conditions. And don't forget, many of these diseases can be caught by people too!



Like us on Facebook & Visit our website www.easthamdog.org

Join us for Windmill Weekend!

September 10 & 11

EDOA has a booth on the Depot Road side of the green. Stop by, say hello and take a chance on one of our raffles!



My First (and Last) Cross Country Trip

By Finn (an 11-year old terrier)

My humans had this big idea to drive cross-country. I wasn't certain what that meant, but they kept telling me this was going to be our "great adventure." I spent my first 3 years in Rhode Island, and my last 8 years here in Massachusetts, but the furthest west I'd been was the Finger Lakes of New York.

I knew "great" described what awaited us when I saw the huge SUV we rented. But even when all my supplies were added to the suitcases, I had a large, comfortable space, complete with my bed, from which to watch the scenery pass.

We spent many long days on the road, but we saw beautiful sights...the plains with newly planted fields as far as we could see, the many rivers that guided the first settlers west over 100 years ago, the snow-capped Rockies and Cascades, the Pacific Ocean, and the many national parks and monuments along the way. Each day I had new scenery, new smells and new places to discover.



Here's why I enjoyed myself on this trip. I had plenty of room in the vehicle. I ate my normal food at my normal times, even if that meant stopping in the middle of nowhere so that I could eat. I drank bottled water throughout the trip so that my stomach would not be upset by the different tasting waters in the 19 states we crossed. Although we knew before we left that dogs are restricted in national parks, we had no problem anywhere because we questioned where we were allowed to walk and because my humans are responsible dog owners. The same is true of the hotels where we stayed. We called and arranged dog-friendly rooms in advance, and not only were the rooms spacious and beautiful, but most gave me dog treats and poop bags on check-in. We maintained a daily schedule with my walks, including plenty of stops during our travel days so that we could stretch and take care of bathroom needs. And finally, I was with two people who love me and made every effort to make certain that I was taken care of each and every day. This was a once-in-a-lifetime trip for me, and while I am happy to be back home, I'm sure glad I had the chance to share in this great adventure.



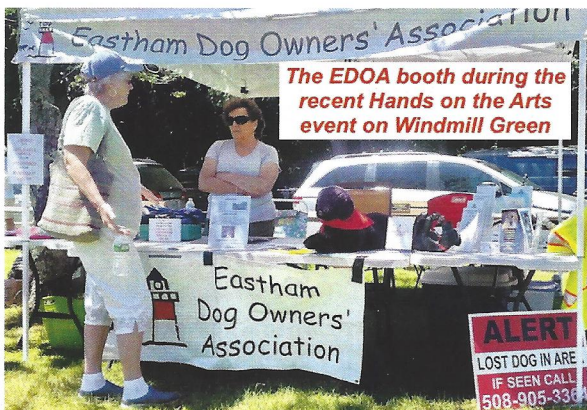
*Buddy Scholarship Winner Shannon Rego
with board member Cindy Blum*

EDOA's 2016 Buddy Scholarship of \$1000 was awarded this spring to Shannon Rego of Harwich, MA. Shannon graduated with honors from Nauset High School in June and plans on attending Colorado State University in the fall, with a declared major in Animal Sciences.

The Buddy Scholarship was established to provide assistance to anyone who lives, works or goes to school in Eastham AND is an accepted applicant at a 2 or 4 year college or vocational-technical school in a Canine/Feline related field such as tech, dog obedience, grooming, or vet science.

Donations to the Fund are easy to make and a beautiful handwritten note will go out to you and to your honoree. If you are looking for a way to honor or memorialize a pet or pet lover, The Buddy Scholarship is the perfect way to do so. NO amount is too small and many employers will match your contribution. You can donate through the EDOA website, the US mail, or by hand-delivering a completed form to an EDOA board member.

Making a donation to the EDOA's Buddy Scholarship Fund is a great way to support continued education for our furry friends.



EDOA Announces

Bumper Sticker Slogan Contest!

We are accepting entries for our first-ever bumper sticker contest. Submit your **SHORT** catch phrase (short enough to be read on a bumper!) to accompany the EDOA logo on our new bumper stickers! The winning entry will win a gift basket to be awarded during Windmill Weekend. Send your entries to info@easthamdog.org or submit by mail to:

EDOA
PO Box 274
Eastham, MA 02642

**DEADLINE AUGUST 26, 2016*

Please help us thank our sponsors!

*Agway of Cape Cod
All Paws on Deck
Animal Hospital of Orleans
Barkers (Orleans)
Cape Cod Underdogs
Colleen's Critter Care
Eastham Veterinary Hospital
First Encounter Coffee House
Nauset Pet Services
St. Aubin's Bayside Cottages
The Cape Cod Dog
The Dune Tramp Photography
Town of Eastham*

**Clip this card & carry a copy
in your wallet. It could
save your pet's life.**



PET ALERT

My Name _____

I have (#) _____ pets at home.

If I am unable to provide care for them for any reason,
please notify this caregiver name and phone #:

SEE REVERSE SIDE



PO Box 274 - Eastham, MA 02642
www.easthamdog.org

EDOA BOARD MEMBERS

Board meetings are held on the third Thursday, every month at 6 pm. All are welcome to attend. Check our website for meeting locations.

Per Bentsen, President	Cindy Blum, Director
Vicky Anderson, VP	Dianne Cullen, Director
Kathy Herrick, Secretary	Joanne Baldauf, Director
Ruth Bentsen, Treasurer	Karie Miller, Director
Kimberly Inman, Director	Ellen Murray, Director
Susie Williams, Director	Tracey Plantier, Director

My pets are home alone.

Please notify the emergency caregiver listed on the front of this card.

My home address: _____

Pet names, types, and descriptions: _____

easthamdog.org

! WARNING
DON'T LEAVE DOGS IN HOT CARS

In 15 Minutes
90° = 144°
Inside of a parked car and possible *brain damage* or *death* for a pet inside

TOO HOT FOR SPOT

TEMP OUTSIDE	TEMP INSIDE CAR
75	118
77	123
81	138
90	143

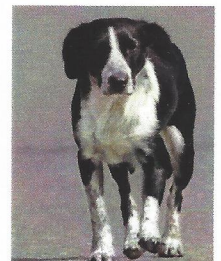
Call 911 if you see a pet in a hot car!

Hot Asphalt / Hot Sand Awareness

Air Temp	Asphalt / Sand Temp
77°	125°
86°	135°
87°	143°



AT 125° F SKIN DESTRUCTION CAN HAPPEN IN 60 SECONDS.



IF YOU WOULDN'T PUT YOUR DOG IN A FRYING PAN, WHY WOULD YOU MAKE THEM WALK ON HOT PAVEMENT OR SAND?

Data Source: Journal of the American Medical Association